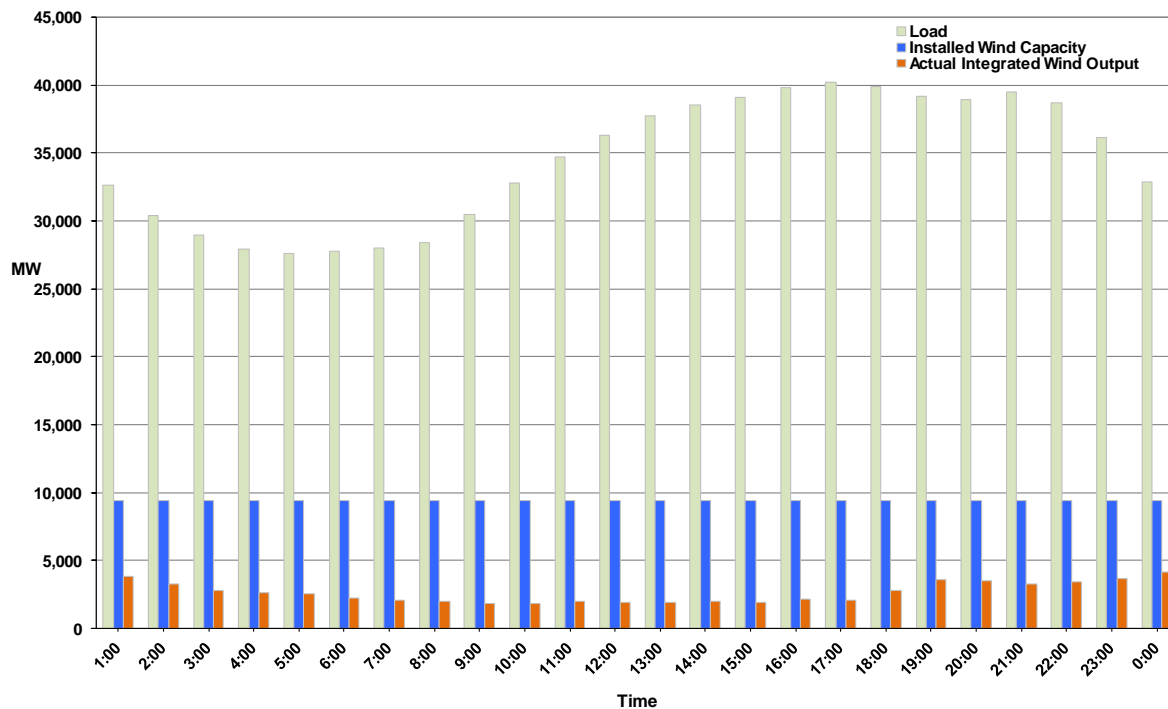




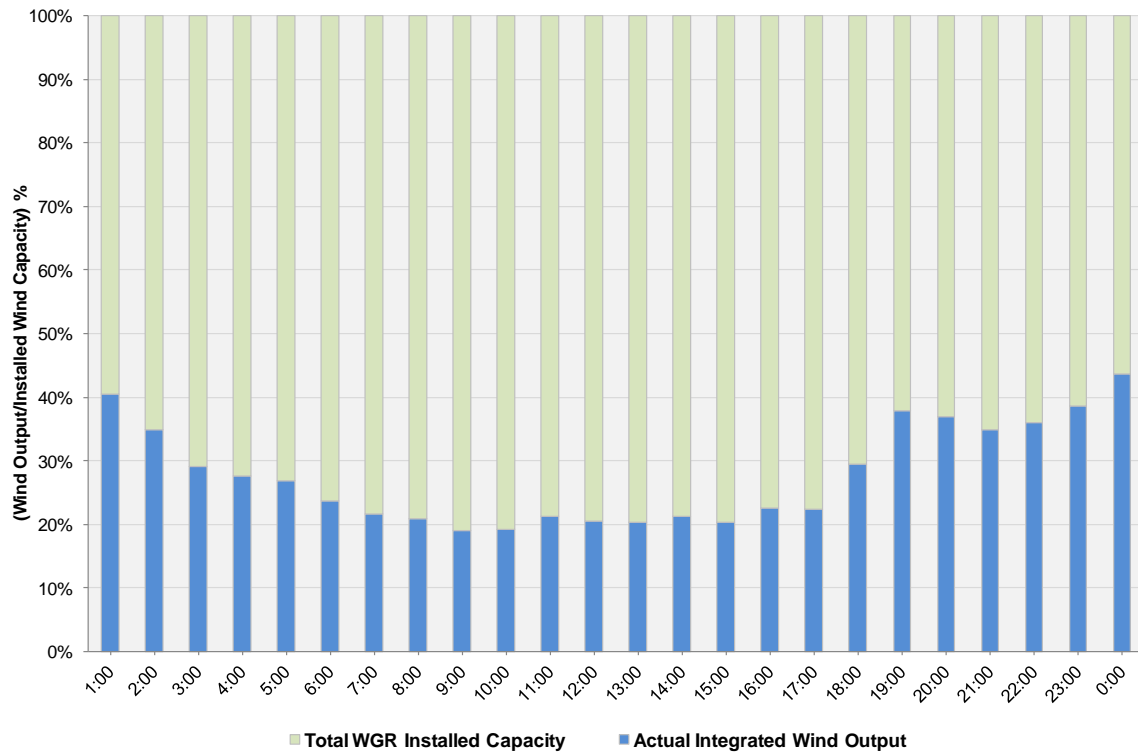
## ERCOT Grid Operations Wind Integration Report: 04/24/11

Peak Load	<b>40,216 MW</b>
Load Peak Hour	<b>17</b>
Wind Record 12/11/10	<b>7,227 MW</b>
Max Wind Value	<b>4,600 MW</b>
Wind Peak Time	<b>23:59:56</b>
Wind Integration %	<b>14.59%</b>

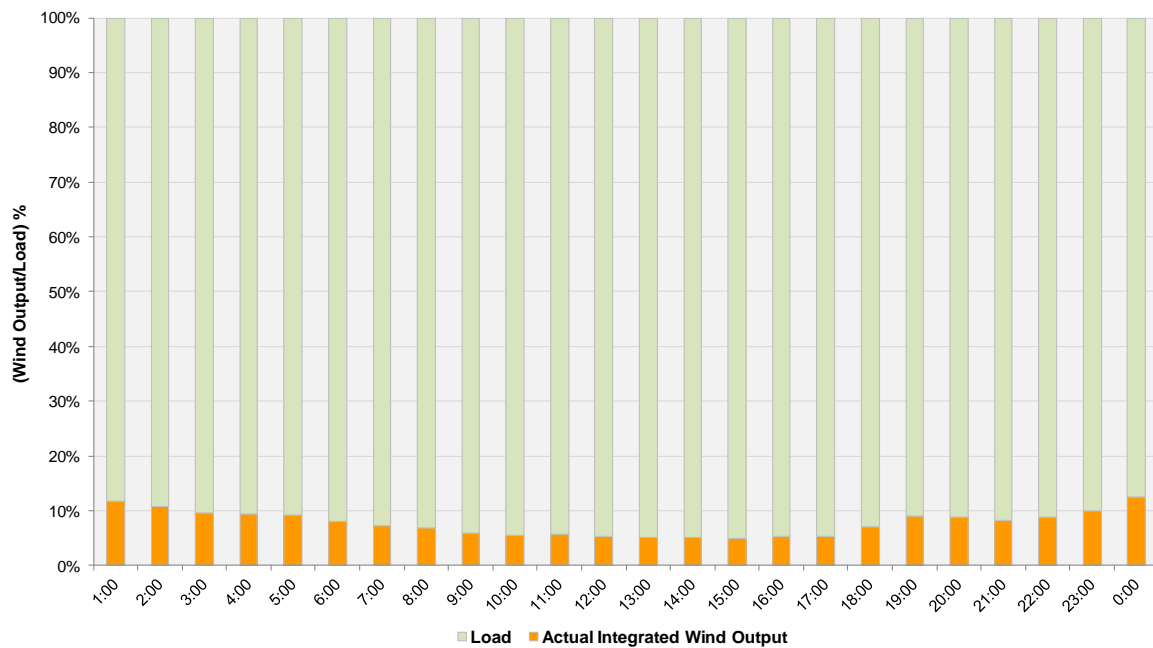
Hourly Average Actual Load vs. Actual Wind Output  
04-24-2011



**Actual Wind Output as a Percentage of the Total Installed Wind Capacity**  
**04-24-2011**



**Actual Wind Output as a Percentage of the ERCOT Load**  
**04-24-2011**



ERCOT Load vs. Actual Wind Output 4/17/2011 - 4/24/2011

